

Reopening Guidelines

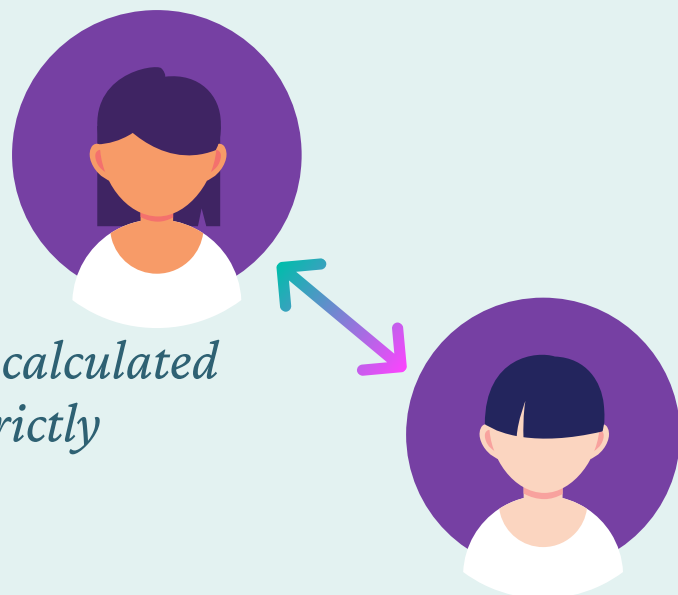
05.10.2020

Please follow these guidelines as we begin to reopen our doors for worship during Phase 2 and 3 of our Reopening Procedures. We will continue to comply with CDC and Texas stated guidelines.

Social Distancing

all gatherings will adhere to strict 6 feet of distancing

Room and gathering capacities will be calculated based on CDC guidelines and will be strictly adhered to.



High-Risk Individuals

All individuals that fall within the high-risk groups as defined by CDC are strongly encouraged to stay at home and worship online.



Childcare/Nursery

Any ministry that requires childcare workers will not reopen at this time.



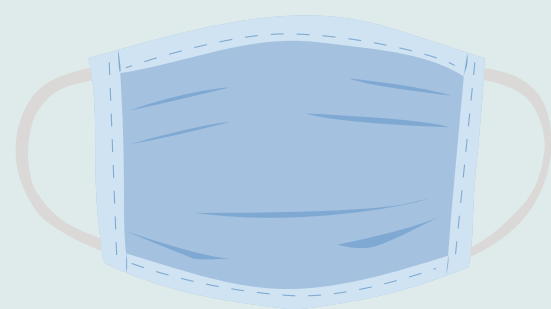
Fellowship

Access to our lounge and other fellowship spaces will be restricted during phase 1 and 2, and will potentially be available in phase 3.



Masks

Masks are required to be worn by all for any and all gatherings.



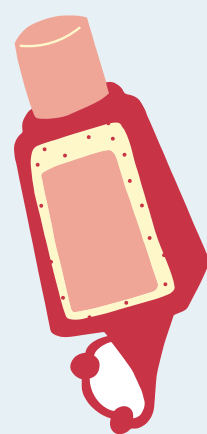
Hand to Hand Items

No items will be passed amongst attendees including and not limited to: offering baskets, print materials. Additionally, all attendees should practice touch-less greetings (no handshakes, hugs, etc.)



Hand Sanitization Stations

Hand sanitizer stations will be located throughout the building, including all doorways and entrances.



Sanitization

Sanitation: All touched surfaces (i.e. doorhandles, countertops, seating, equipment, etc.) will be sanitized between worship services and gathering times.



Thermometers

Touchless thermometers will be used for all staff and attendees prior to entry. Those who register a temperature above CDC guidelines will be politely asked to refrain from attending services. Additionally, those who are symptomatic are asked to worship from home until they are symptom free.



Worship Times

We will be offering an additional service at 8:30 AM. If needed, other services will be considered and provided based on need.



Restrooms

Restroom access will be limited and monitored to maintain all social distancing practices.



Seating

Upon entry, all attendees will be assigned a seat to ensure safe distancing practices and so that we are able to contact trace in case an attendee tests positive.

